

STREACOM™



FLIRC-SE

Page	Contents
2.....	Index, Message, Introduction
3.....	Product Overview
4.....	Installing the PCB
5.....	Wiring Diagram
6.....	Software Installation

A Message from the Streamcom Team

“ Thank you for choosing Streamcom! Beyond our beautifully crafted cases, we understand the need for accessories to help build and complete your PC system. As with our cases, its not just a question of supplying all and every accessory possible, but identifying which ones are genuinely important, and then making sure we supplying one that is above and beyond what is already available.

Every care has been taken to ensure that this product meets the highest quality and standards we have defined. If anything about this product falls short of your expectations or you have any questions that are not covered in this user guide, please contact us online at www.streamcom.com/contact. We respond to every question received and your feedback is a critical part of our ongoing product development and refinement.

From everyone at Streamcom, we hope that you enjoy using our product!



Introduction

The FLIRC-SE (Streamcom Edition) brings you all the amazing features of FLIRC, but in a package designed to fit inside Streamcom cases and with the additional advantage of power on from S4/S5 power states*.

For those of you who don't know, FLIRC is the #1 solution for PC IR control and incredibly easy and flexible to use. FLIRC learns virtually any IR remote, not caring about different vendor protocols or codes. No need to look up the remote model, just walk through the super simple software setup, pairing individual remote buttons with keyboard/actions on the PC and you're done. This also allows you to fully customize which button are used for what function and more importantly means you can use your existing remote control instead of having to purchase a dedicated one.

The software runs on Windows, Linux and OSX, and since the GUI was designed with QT, its uniform across all platforms. All remote pairing information is stored on the FLIRC itself, meaning that even if you wipe your system, you won't need to repeat the pairing procedure.

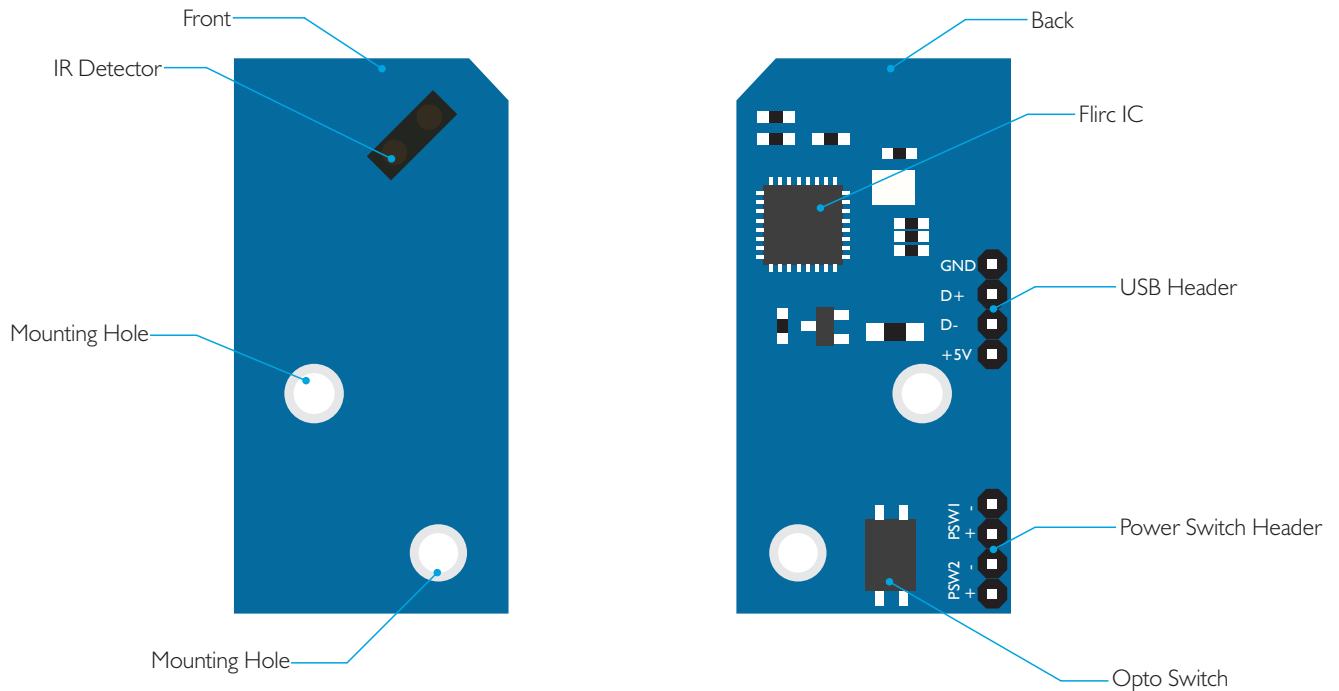
COPYRIGHT NOTICE

Copyright © 2014 Streamcom. All Rights Reserved. No part of this publication may be reproduced, stored in a retrieval system, or transmitted, in any form or in any means – by electronic, mechanical, photocopying, recording or otherwise – without prior written permission. All trademarks and registered trademarks in this publication are the property of their respective owners. Streamcom is a registered trademark.

Specification

OS Compatibility:	Windows, Linux, OSX
IR Range:	10 Meters Max
IR Frequency:	38kHz
Connectors:	1 x USB (4PIN), 1 x Power Switch (2+2PIN)
Max Number of Stored Keys:	160
Dimensions:	22 x 48 x 13mm (WxHxD)
Weight:	5g Excluding Cables
Special Features:	Power On from Off (S4/S5) state*

Key Features

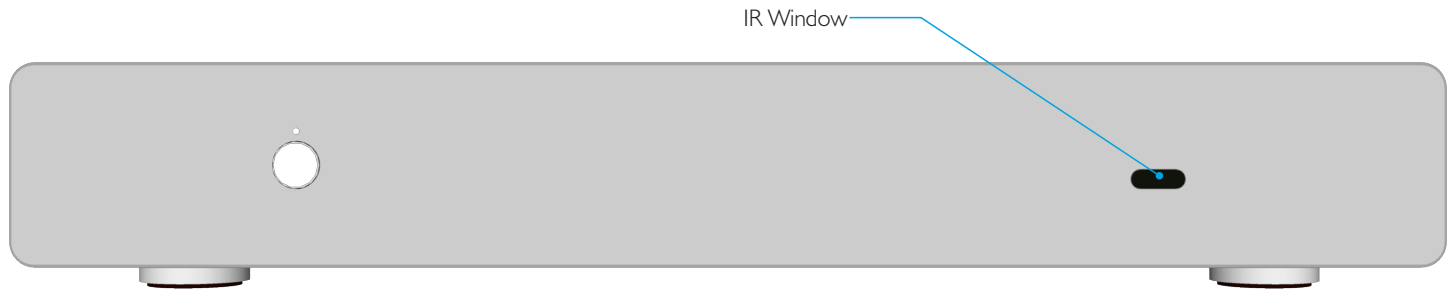


What's Included

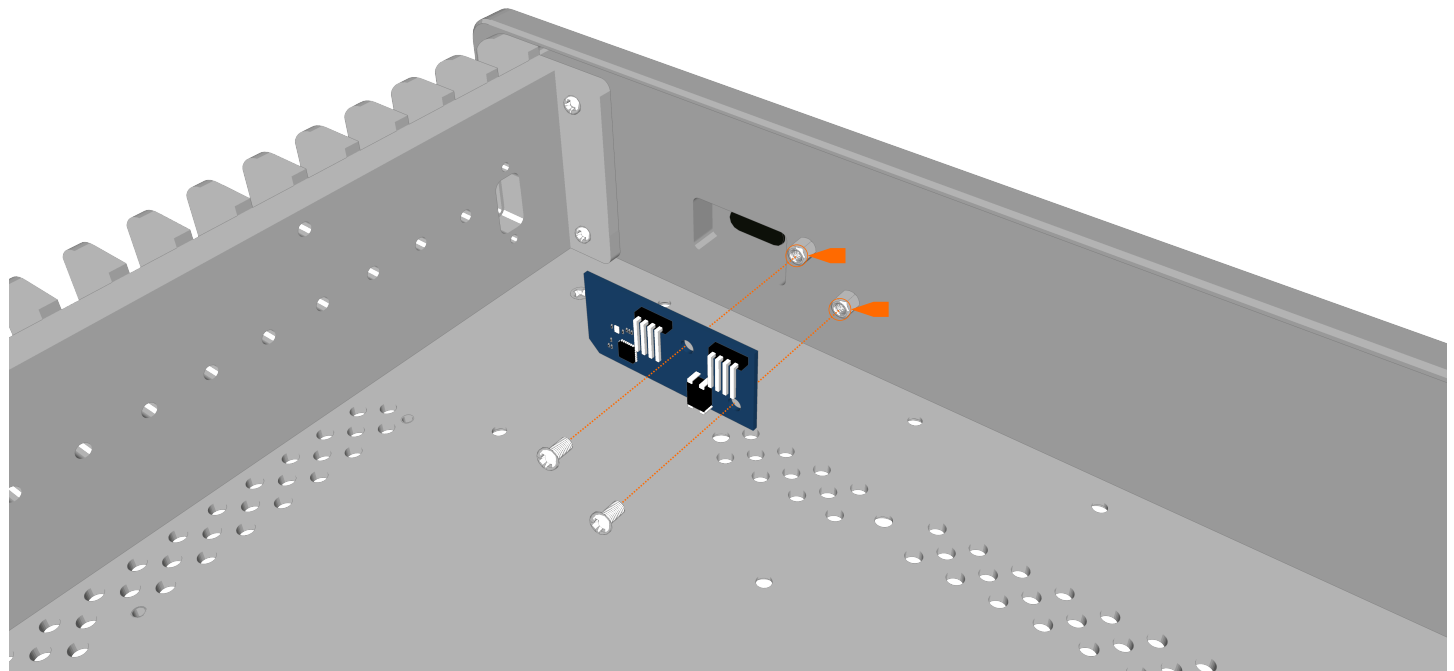
1 x Flirc-SE PCB, 1 x 4PIN Internal USB 2.0 Cable, 1 x 2PIN Power Switch Cable

Fitting the Flirc-SE PCB

Streacom cases that are capable of accepting an internal IR receiver are clearly identifiable by the black acrylic IR window located on the front of the case. Directly behind this window will be 2 stand-offs for the Flirc-SE PCB. For reference, below is the FC5, but the same is applicable to all Streacom cases.

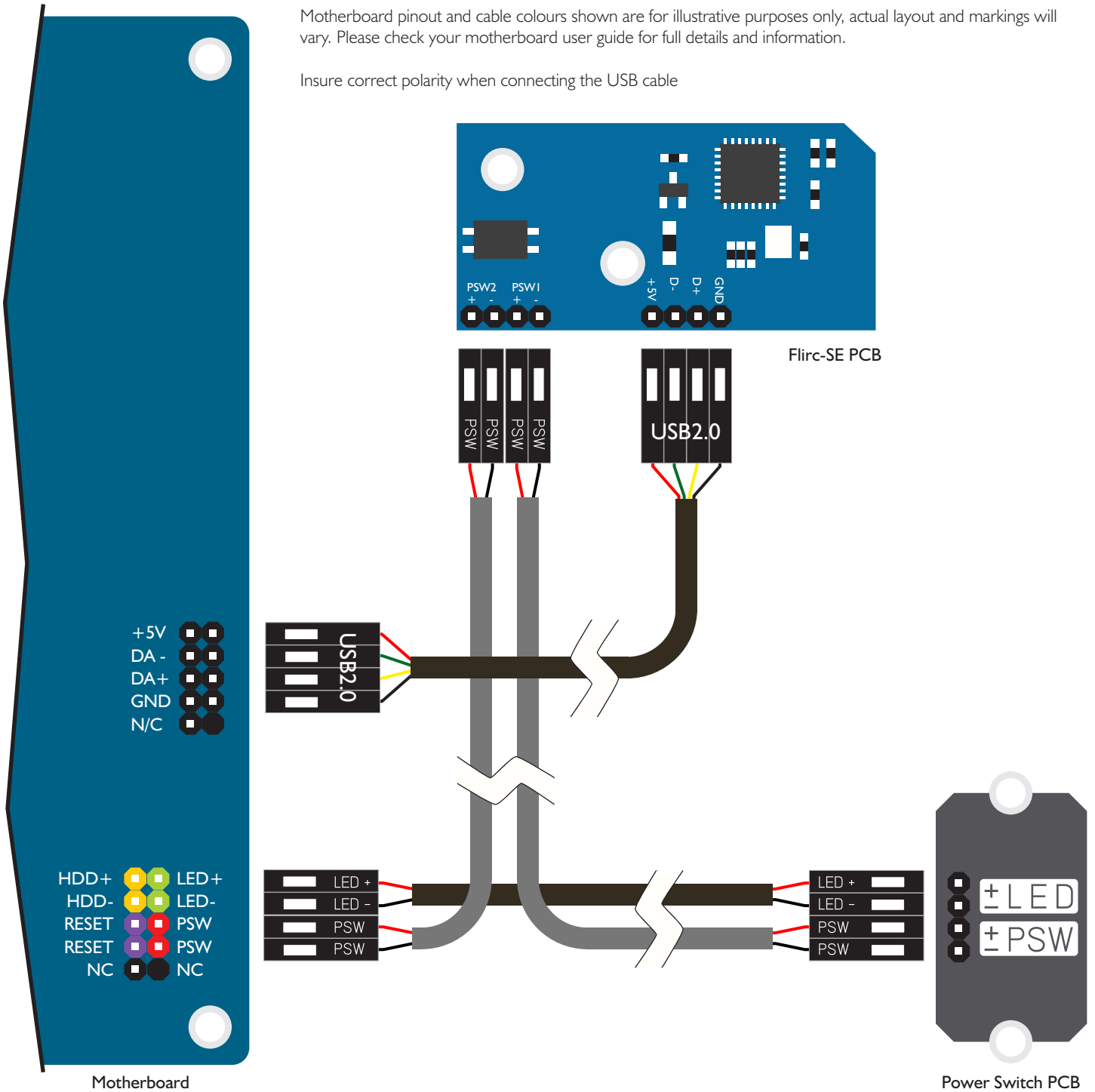


Locate the 2 stand-offs behind the IR window and attach the Flirc-SE PCB to them using the screws supplied with the case.



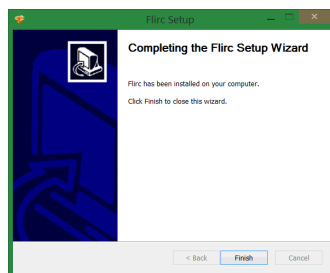
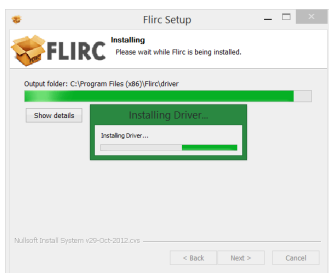
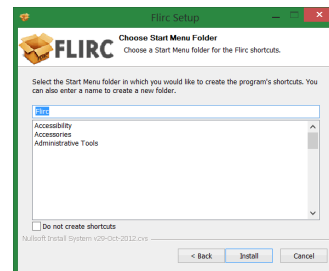
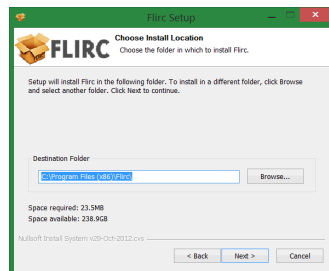
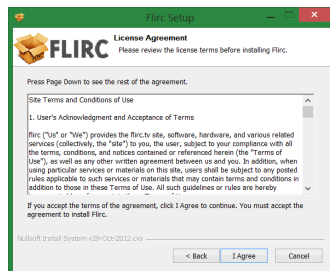
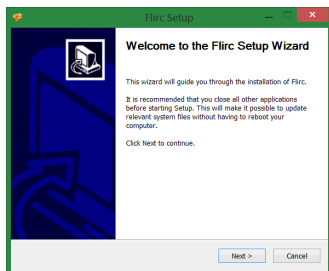
Motherboard pinout and cable colours shown are for illustrative purposes only, actual layout and markings will vary. Please check your motherboard user guide for full details and information.

Insure correct polarity when connecting the USB cable

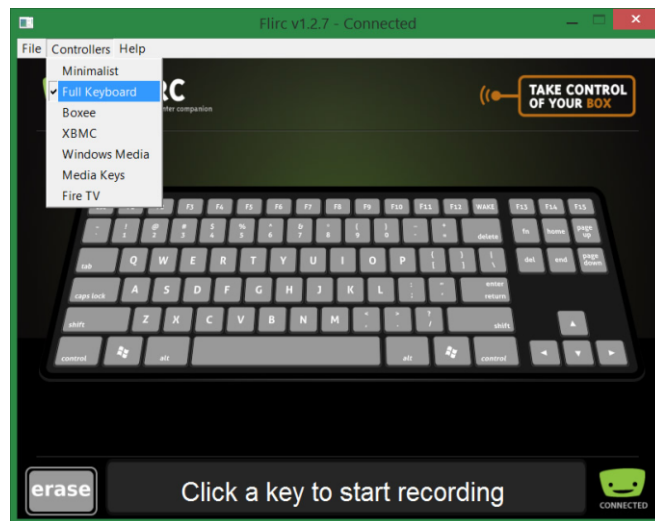
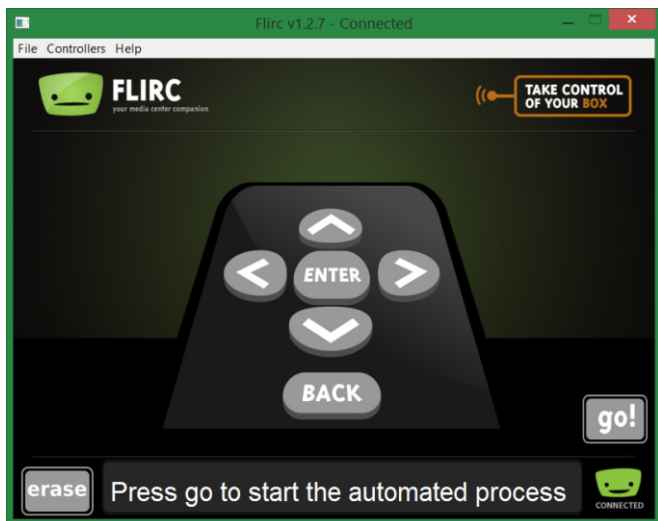


Software Installation

With the hardware now installed, download the latest Flirc software from www.flirc.tv Once downloaded unzip all files, execute the setup program and follow the on-screen instructions.



With the software now installed, run Flirc and use the GUI to select which controller you would like to program. Grab your remote and start customizing!



For more information or support, visit www.streacom.com or www.flirc.tv

